

RV Snap Trap Installation Guide

IMPORTANT: The RV Snap Trap requires the use of a standard sewer hose support.

Preferred Placement

Pull the sewer hose support away to make room for the Snap Trap.
The Snap Trap may be installed at any point within the sewer hose support run.
The legs may be omitted as they are not required.



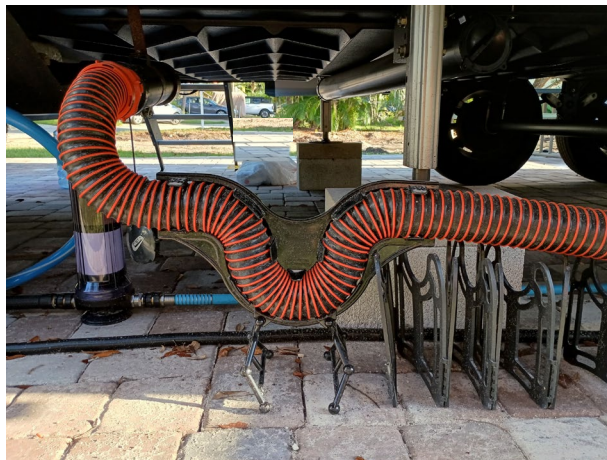
Legs positioned in the “**LOW**”
height setting

OR



Legs Removed

Auxiliary Placement



To install the Snap Trap at the beginning of the sewer hose support run,
position the Legs in the “**TALL**” height setting.